



AWARDS FOR
**PLANNING
EXCELLENCE**
2015

PIA Awards for Planning Excellence

CONTENTS

Message from the PIA SA President	4
Message from the PIA SA Awards Convenor	5
2015 Awards for Planning Excellence sponsors.....	6
2015 Awards Convenor & Judges	7
Young Planner of the Year	8
Best Planning Ideas Award - Large Project	9
Best Planning Ideas Award - Large Project	10
Best Planning Ideas Award - Small Project	11
Public Engagement & Community Planning Award.....	12
Improving Planning Processes and Practices Award	13
The Hard Won Victory Award	14
Great Place Award.....	15
Great Place Award.....	16
Outstanding Student Project Award - Tertiary.....	17
Outstanding Student Project Award - Tertiary.....	18
Minister's Award	19
President's Award	20
Fellow Elevations.....	21-23
2015 Awards for Planning Excellence Overview	24
2015 Planning Excellence Awards Nominees	25-26



The Planning Institute of Australia (PIA) is the peak national body representing planning professionals. PIA was established in 1951 to serve planning professionals and promote planning as a profession. PIA boasts approximately 5,000 members and supports planners in all states and territories in Australia. It also has representation in 36 different countries around the world. PIA aims to support the Australian planning profession and community in the creation of liveable communities, vibrant economies, sustainable places, diverse cultural expression and social cohesion.

Contact PIA
For more information on PIA policy, events, initiatives and becoming a member, visit www.planning.org.au

Level 1/ 162 Fullarton Road
ROSE PARK
SA 5067
Tel (08) 8361 3613
sa@planning.org.au
www.planning.org.au

PIA Awards for Planning Excellence

MESSAGE FROM THE PIA SA PRESIDENT



The 2015 Planning Institute Awards for Planning Excellence are an opportunity for the planning industry to recognize the contribution of planning and planners to the creation of sustainable communities and great places. The Awards for Planning Excellence highlight the diverse and varied roles of planners in the planning and development of our urban and regional environments. The Awards demonstrate what can be achieved by focused teams with diverse skills and a common goal.

The Awards for Planning Excellence also recognize outstanding performance, leadership and contribution of individual planners to the industry or their community. The Planning Institute Awards for Planning Excellence are an opportunity to celebrate planning success and share knowledge for the betterment of the profession and the communities we serve.

Being involved in the Awards judging again this year I congratulate all the nominees for the quality of their work and thank them for the time put into nominating projects for recognition. While not every nominated project will come away with an award, all of the projects that have been nominated deserve recognition for the contribution they have made to the planning and development of South Australia.

I would like to recognize the efforts of the PIA Awards Judging Panel, led by Awards Convenor Stuart Mosely. The judges give up their time and are faced with some tough decisions as

part of Award deliberations. Successful South Australian projects will go on to compete at the National Planning Institute Awards for Planning Excellence and represent the great work that is being undertaken in South Australia.

So to all the SA Planning Institute Awards for Planning Excellence winners and nominees I offer my congratulations. To the planning industry I offer a well done on another year of making a real impact on the creation of great places and communities in South Australia.

A handwritten signature in dark ink that reads "Darren Starr". The signature is written in a cursive, slightly slanted style.

Darren Starr MPlA CPP
PIA SA President

PIA Awards for Planning Excellence

MESSAGE FROM THE PIA SA CONVENOR



A record high number of award nominations this year is testament to the buoyancy of the profession in this State.

Nominations have once again spanned the public and private sectors, regional and metropolitan contexts and a wide range of social, economic and environmental issues. While the scale and value of projects nominated is down this year on previous years, this no doubt reflects the State's economic fortunes and demonstrates that good planning can deliver quality outcomes at any scale – site, street, neighbourhood, city or region.

By the time you read this, debate will be well advanced on delivering a new planning system for South Australia – the first comprehensive overhaul since 1993. This presents the profession with a unique opportunity to lead a balanced public dialogue about the role planning can play in revitalising the State's economy while also delivering quality outcomes for communities and the environment – and no doubt resulting in a field of quality nominations next year!

On behalf of the judges, I express my appreciation to all those who put in the effort to prepare and lodge nominations – without you,

these awards could not succeed in showcasing the achievements of the profession and drawing attention to the value planning can deliver.

My thanks also to the judges, each of whom has put in many hours to review and collaboratively evaluate the nominations we received. Thanks also to the Jodi and Carly at the PIA office for making it all happen.

It is an honour to convene the judging panel and a privilege to see just how much good work is done by so many across the profession. I congratulate all the nominees and wish the winners well for the national awards in Brisbane in May 2016.

A handwritten signature in black ink, appearing to read 'Stuart Moseley'.

Stuart Moseley FPIA, CPP

PIA Awards for Planning Excellence

SPONSORS

PIA SA thank the generous sponsors of the 2015 Awards for Planning Excellence.

MAJOR SPONSOR



CATEGORY SPONSORS



PIA Awards for Planning Excellence

AWARDS CONVENOR AND JUDGES

PIA SA thank the Convenor & Judges for their time and assistance with the 2015 Awards for Planning Excellence.

CONVENOR

Stuart Moseley



JUDGES

Cate Atkinson



Simon Tonkin



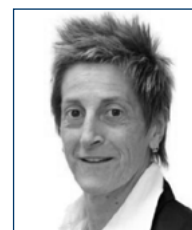
Gavin Leydon



Darren Starr



Dr Donna Ferretti



Doug Wallace



Lisa Teburea



Young Planner of the Year

Outstanding Achievement by a Young Planner

AWARD

LAURA MURPHY

Jacobs Group (Australia) Pty Ltd



MASTERPLAN
TOWN + COUNTRY PLANNERS

Laura has been an active member of PIA for over three years having graduated from the University of South Australia's planning program in 2014.

In her role as chair of South Australia's Young Planners group, Laura makes a significant contribution to enhancing career opportunities for her colleagues by encouraging young planners to look beyond traditional employment paths and applying the broad menu of skills that planners acquire to less conventional career options. To optimise the benefits of this, Laura has introduced a different approach to Young Planners' events by collaborating with other young professional groups so that young planners get a taste of working in multi-disciplinary teams. Laura's contribution to advancing the careers of young planners does not stop there as she continues to mentor and encourage students in undertaking a future career in planning.

Laura's academic performance has been exemplary, as evidenced by the Australian Sociological Association Conference accepting a paper she had co-written with the late Dr Lou Wilson in 2014. Examining levels of social exclusion in master-planned communities in northern Adelaide, the paper demonstrates the lack of social planning initiatives in the development of these communities and the attendant issues arising from this lack of attention to social issues. As a result of outstanding academic work of this nature, Laura has been awarded an Australian Postgraduate Scholarship to undertake future PhD studies at the Australian National University – a truly outstanding achievement for a young planning graduate.

Laura continues to demonstrate fine leadership skills and a commitment to the profession in her workplace where she has been entrusted with more complex tasks normally allocated to experienced planners. In short, Laura is an exemplary young planner who is thoroughly deserving of this award.



Best Planning Ideas Award - Large

This Award recognises outstanding planning ideas.

COMMENDATION

RESILIENT SOUTH REGIONAL CLIMATE CHANGE ADAPTATION PLAN

City of Onkaparinga, City of Holdfast Bay, City of Marion, City of Mitcham, URPS, Seed Consulting Services, Jacobs, Ecocreative, Eonsearch, Australian Workplace Innovation and Social Research Centre, Concepts of Change

The Resilient South Regional Climate Change Adaptation Plan sets out a comprehensive framework to guide future planning and decision making of organisations and individuals to adapt to climate risk in the southern Adelaide region. This Plan is among the most comprehensive and well executed of its kind in South Australia and is supported by well-presented documentation.

The recommended actions are firmly grounded in scientific evidence; however the project stands out for its understanding that the values, decisions and behaviours of individuals is critical to achieving meaningful climate change action. The project is commended for its comprehensive and replicable engagement model, which involved over 150 project champions from a diverse range of sectors.

The creation of an on-line mapping resource to assist in future planning and adaptation modelling is a valuable outcome of the project.

With ongoing commitment from the four Council partners to implement the package of preferred options for adaptation, this project has the potential to tackle the identified climate risks within the southern Adelaide region.



Best Planning Ideas Award - Large

This Award recognises outstanding planning ideas.

COMMENDATION

MALLALA BROADACRE FARMING STUDY

District Council of Mallala, Planning Aspects Pty Ltd, MWH Global, Tonkin Consulting, Donna Ferretti & Associates

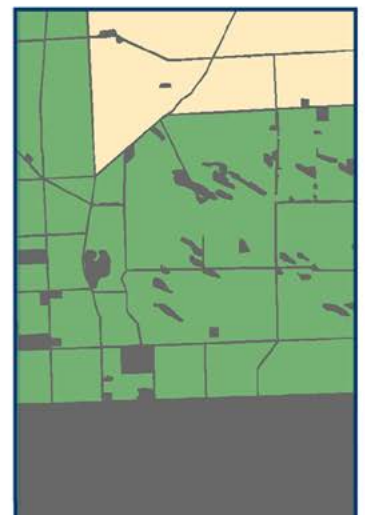
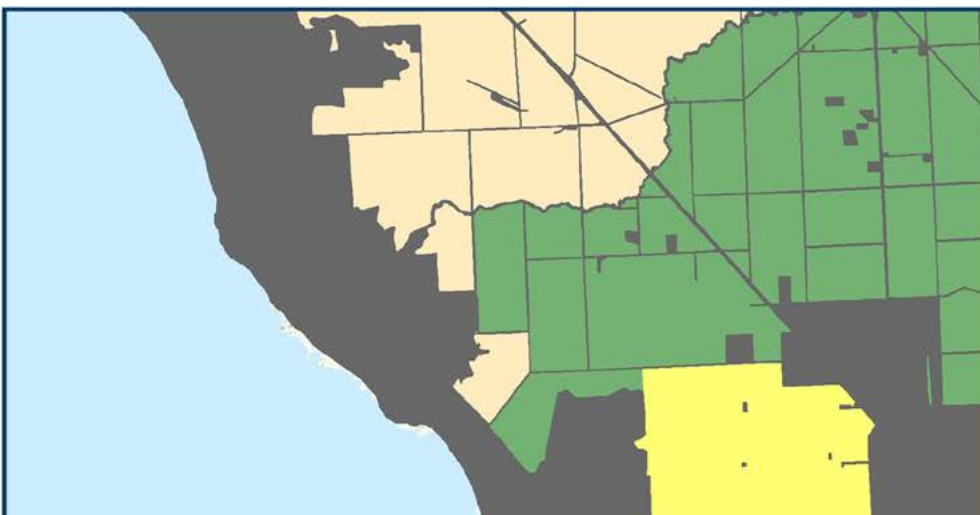
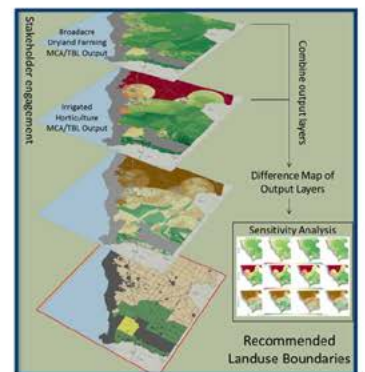
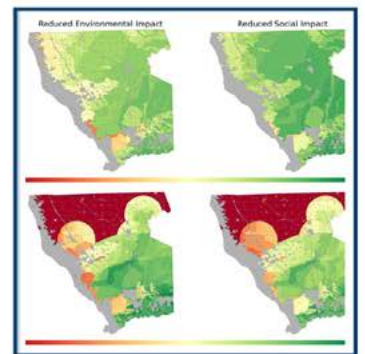
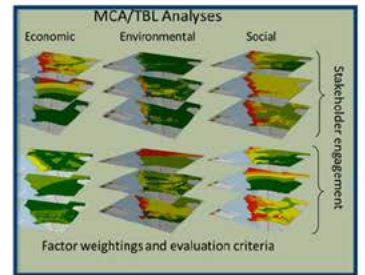
This work gets back to the grass roots. It deals with the real issues of land capability married with the social, economic and other environmental considerations.

Although not unique in analytical methodology, it employs techniques and innovates by designing and developing a model utilising existing open source software technology that enables rapid input and output analysis.

The value of this work through its competent delivery is readily applicable in a range of circumstances to enhance the integrity of analysis by planners and authorities for the identification and best use of land considering all relevant criteria.

The community was engaged through representative groups which were described as having competing interests. These provided a platform for testing the views and weightings of the assessment criteria. This proved the capacity of the model to be responsive to input variables and alternate scenarios. This process appeared to seamlessly provide collaboration between those competing interests engaged as the reference group and the leadership team.

The nomination shows that a robust model, as developed for this study, can be of considerable assistance in the planning process and provide a lead to other analysis of land and broader environmental, social and economic interests. This study and the model developed therein deals with the practical issues associated with farming and horticulture land use considerations in Mallala. In so doing, this work can assist in the preparation of policy and the explanation of decisions having regard to all inputs and views. Incorporation of this type of analysis in Development Plan Amendments has the potential to provide greater knowledge to create realistic and achievable outcomes.



Best Planning Ideas Award - Small

This Award recognises outstanding planning ideas.

COMMENDATION

RIVER AND COASTAL COMMUNITIES URBAN DESIGN FRAMEWORK AND MASTER PLAN

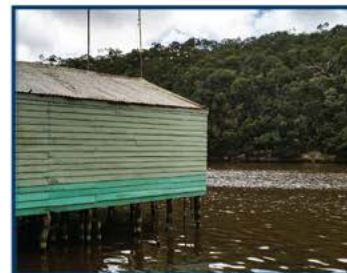
District Council of Grant, MasterPlan SA Pty Ltd, Ian Robertson
Design, Outerspace Landscape Architects

This is an excellent project that has demonstrated a proactive and creative approach to responding to the needs for public realm improvement over 8 small communities within the south east of the State.

The project embraced the need to establish a consultation strategy that engaged small communities across a wide area, each with individual identities and needs. The urban design framework and masterplan resulting from the investigations was comprehensive and reflected a range of approaches to ensure successful implementation of the recommendations.

Changing spaces within small communities is often controversial. The judges considered the engagement strategy which became the design process, was tailored to each community and the community outcome has been an easy to read but comprehensive analysis with understandable information to promote implementation.

The masterplan's approach of establishing manageable precinct plans with elements the community can implement as well as Council, has provided a clear direction of where improvement can be established without over stretching expectations. The inclusion of good examples of improvement strategies, budget and funding sources, and easy to read diagrams ensures the project has deliverable outcomes which will have positive impacts on the communities.



Public Engagement and Community Planning Award

This Award recognises initiatives in best practice public engagement that achieve an outstanding and innovative contribution to social planning practice and outcomes.

AWARD

MEMORIAL GARDENS MASTER PLAN

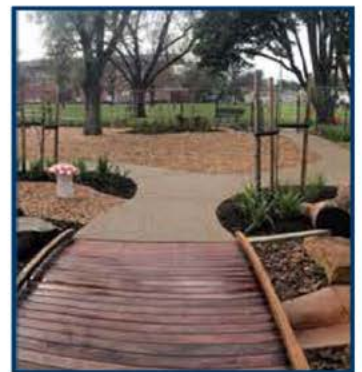
City of Prospect

This is an excellent project that has demonstrated a proactive and creative approach to creating a vibrant and exciting park.

The project has transformed an existing park to create a great park for children and people of all ages with its own character, amenity and a new identity.

The public engagement and consultation processes were well designed and comprehensive, to ensure engagement with the community and children. The judges particularly endorsed the way children were encouraged to participate with different designs for their response placed at low heights and the use of smiley face stickers on different elements to determine what children wanted, and the use of public events to encourage participation. The outcome is a project that reflects some groovy ideas.

Changing spaces is often controversial and is done on only one dimension. The judges considered this project has achieved a significant place making project which demonstrates a great outcome. Whilst not highly technical or complicated, the process worked and has delivered a great park which can be activated to the benefit of the community, and yet retain its functionality. The engagement process, design approach, and implementation demonstrates outstanding techniques of planning which is now providing a return and promotes the value and innovation of place making.



Improving Planning Processes and Practices Award

This Award recognises the achievements of planners, planning authorities and development entities in translating good planning policy into improved processes and practices in the workplace and 'on the ground'.

COMMENDATION

SOUTH AUSTRALIAN BETTER PRACTICE GUIDE – WASTE MANAGEMENT FOR RESIDENTIAL AND MIXED USE DEVELOPMENTS

Jensen Planning + Design; Rawtec, Green Industries SA, Renewal SA, Property Council of Australia SA

As we shift to more compact and sustainable forms of urban living, we will need smarter and better-designed options for waste management facilities within our residential and mixed-use buildings. The planning system has a key role to play in meeting these challenges.

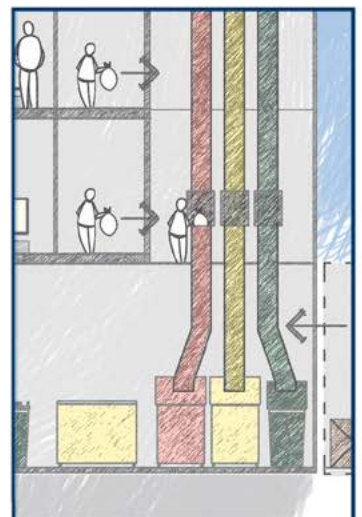
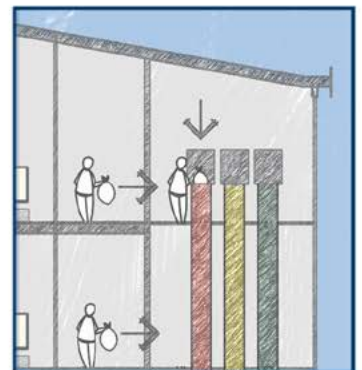
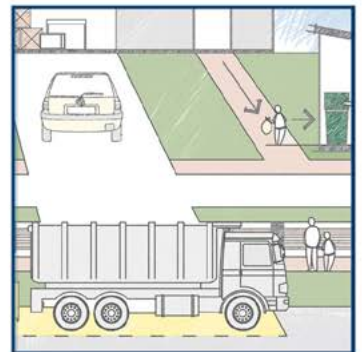
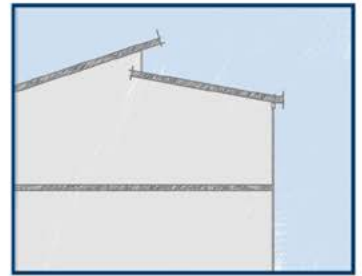
While apartments are still emerging as a housing choice in Adelaide, anyone who doubts the significance of the waste management challenge that densification brings need only observe the clutter of bins that crowd the footpath outside many of our mid-rise apartment buildings on rubbish night! We need a better way.

This project is a great example of a well-researched, comprehensive and integrated response to an important policy issue.

It identifies a range of design, costing and management measures and sets out a balanced implementation approach that encompasses regulation, guidance, promotion and training. It is targeted at a balanced cross-section of stakeholders including designers, developers, assessors and – importantly – the consumers who ultimately live in and operate residential and mixed-use buildings.

Developed in a partnership between Government and industry, the Better Practice Guide is already being applied across the development industry and in development assessment.

The judges commend this project for its important contribution to the maturation of apartment and mixed-use living in Adelaide.



The Hard Won Victory Award

This Award is for a planning initiative, effort or leadership that has resulted in positive planning outcomes in the face of difficult or trying circumstances.

AWARD

FRANK HILTON LANDFILL REMEDIATION PROJECT

City of Onkaparinga

This project has seen the transformation of a former landfill site into one of Southern Adelaide's most iconic and well used pieces of public open space – the Frank Hilton Reserve at Maslin Beach.

Over a protracted period of some 7 years, the City of Onkaparinga worked collaboratively with a diverse range of community, state and local government stakeholders to overcome a daunting array of complex environmental and economic issues.

The remediation of landfills and contaminated sites is difficult at the best of times, but when dealing with a coastal location subject to ongoing risks of leaching contaminants, exposure and subsidence of solid waste, erosion of an existing sea wall and management of stormwater and landfill gas, these difficulties tend to compound.

In resolving these difficulties through an impressively collaborative and productive working relationship with the EPA, Council was then confronted with implementation costs that substantially exceeded the allocated budget. Rather than abandon the project, Council's engineering and planning departments worked together to devise an alternative risk based solution involving a design that enabled financially and environmentally sustainable outcomes.

During the life of this project, Council were confronted with issue after issue after issue. In finding innovative solutions to overcome these issues, Council has demonstrated admirable resilience and commitment to providing its community with an attractive and enduring public space asset that will benefit users for many years. A well deserved and impressive hard won victory!!



Great Place Award

This Award recognises a great place, street or neighbourhood in South Australia.

COMMENDATION

PLAYFORD ALIVE TOWN PARK

ASPECT Studios, Playce Pty Ltd, Wallbridge & Gilbert, FMG Engineering, URPS, Hydroplan, Lucid Engineering, Rider Levett Bucknall

Generally, public realm in our outer suburbs receives far too little attention – particularly when those suburbs are in their critically important establishment phase. And yet there is, if anything, an even greater imperative to ensure that public places in these suburbs are well designed, well executed and carefully curated.

Playford Alive Town Park is redefining the standard for public spaces in outer and developing areas, and is well on the way to achieving many of the characteristics of a “great place”.

Only recently opened to the public, it is already attracting, inspiring and motivating the many people who use it every day. It has a great atmosphere, it sparks a sense of pride and contributes to the wellbeing of one of the most disadvantaged communities in Adelaide.

As a multifunctional space that was designed in close consultation with the local community and end users, Playford Alive Town Park provides a range of passive and active recreation opportunities and will established connection with adjacent residential, community and commercial land uses as and when they are developed.

Acting as a community meeting place as well as a functional recreation area the Playford Alive Town Park has been embraced by the wider community which is a reflection of the community involvement in the design process and a resultant sense of community ownership.

The judges commend this project for developing a place that encourages and embraces users and visitors of all ages and contributes to active and connected communities



Great Place Award

This Award recognises a great place, street or neighbourhood in South Australia.

AWARD

ADELAIDE OVAL

Adelaide Oval Stadium Management Authority (AOSMA)

Adelaide does not have many places that attract national attention on a regular basis, act as a magnet for visitors from across Australia, and energise their surroundings to bring energy, life and atmosphere into the heart of the City.

The redeveloped Adelaide Oval does all this and more.

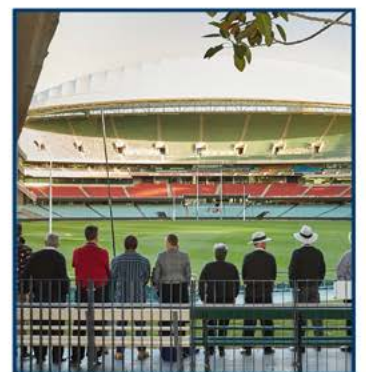
While Adelaide Oval has a long history as a place of entertainment and cultural significance, the redevelopment of the Oval has lifted not just the Oval itself but the entire City.

Strongly connected to the fabric of the City by pedestrian and open space links, and readily accessible to metropolitan Adelaide by public transport, the Oval is a place that hums. It is regularly thronged with crowds, not just for AFL matches, but increasingly for a range of other events.

And these crowds don't just energise the stadium, they energise the city. They bring life to the streets, they patronise nearby businesses and they create an intensity of activity rarely seen in Adelaide outside festival events.

The Oval itself is outstandingly well designed and is acknowledged as one of Australia's leading sporting venues. It uses technology, social spaces and the retention of historic features from the original Oval to create a distinctive visitor experience and deliver an economic benefit to the State that will exceed \$330M in 2015.

Seldom is it possible to point to a single project that transforms a city – but the redevelopment of the Adelaide Oval is just such a project and is well deserving of recognition as a truly Great Place.



Outstanding Student Project Award - Tertiary

This Award recognises outstanding planning work by a tertiary student.

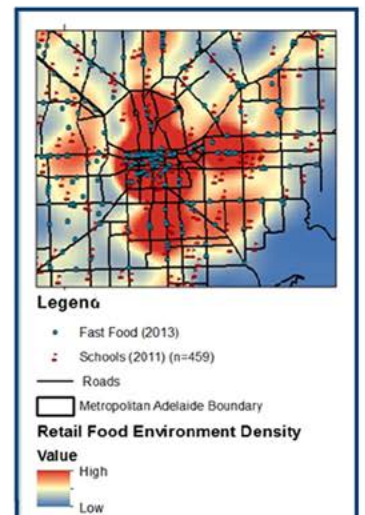
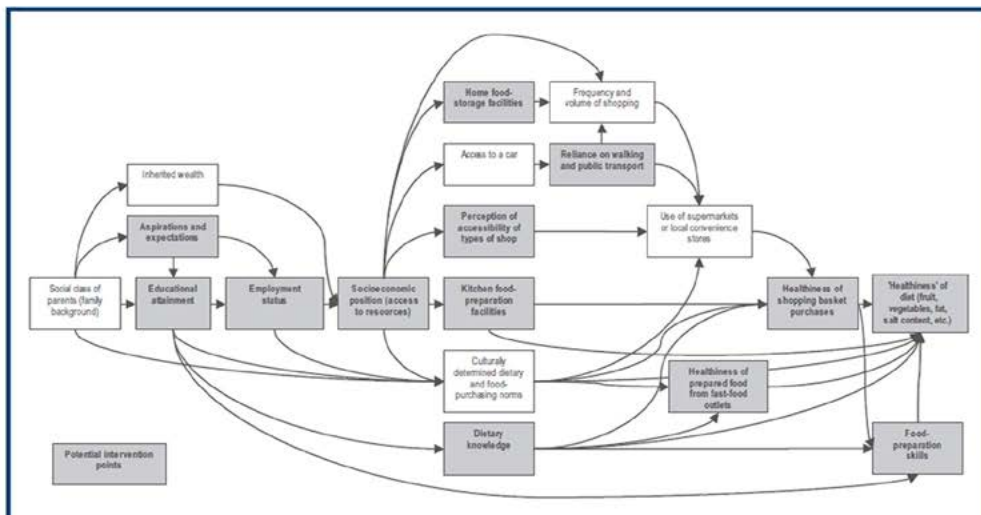
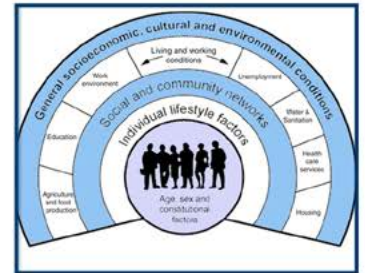
COMMENDATION

SOCIAL INEQUALITIES IN FAST FOOD EXPOSURE AROUND SCHOOLS IN METROPOLITAN ADELAIDE: AN URBAN PLANNING PERSPECTIVE

Hannah Kennedy (University of South Australia)

This thesis examines the spatial distribution of fast food outlets across metropolitan Adelaide with a view to determining the extent to which this affects the health outcomes of particular social groups. Using GIS, statistical modelling and a range of cross-sectional data sets, the study demonstrates that there is a substantially greater exposure to fast food outlets close to schools in lower socio-economic suburbs compared to schools in high socio-economic suburbs. Armed with this telling statistic, the study uses a case study to argue that planners could effectively re-shape levels of exposure to fast food outlets and, therefore, the health outcomes of school users, through the use of zoning controls.

While the relationship between exposure to fast food and the health of students remains a question for further research, the thesis nonetheless attests to the powerful influence that the regulation of land use activities can have on a range of social and health indicators. Given the alarming increase in levels of obesity across Australia in recent years, Hannah Kennedy's study is timely reminder of how taken-for-granted planning practices can often have serious and adverse unforeseen impacts.



Outstanding Student Project Award - Tertiary

This Award recognises outstanding planning work by a tertiary student.

AWARD

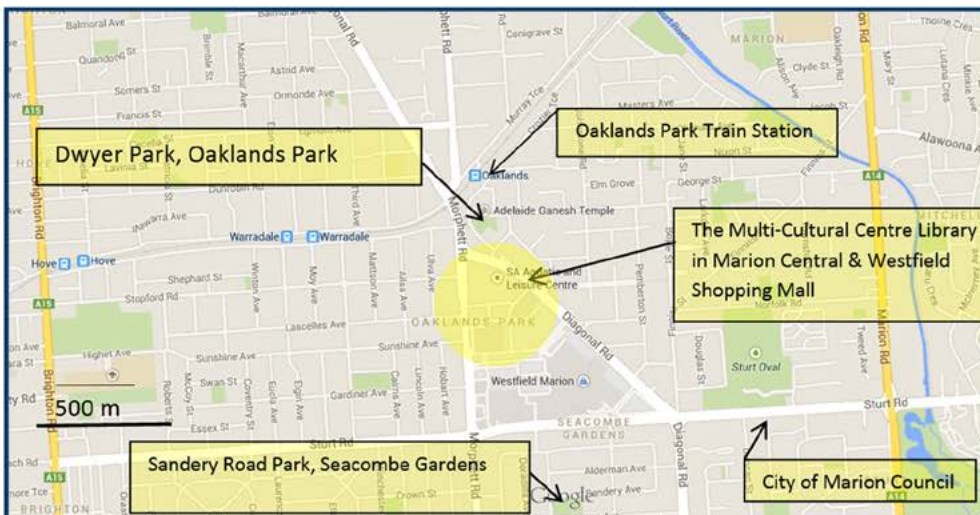
PUBLIC SPACES FOR EVERYONE OR JUST THE MAJORITY?

Eve-Marie Davie (University of South Australia)

This thesis interrogates a critical contemporary question for planners and designers when developing public open space; that being the extent to which public space caters to the needs of culturally and linguistically diverse (or CALD) communities. At a time when notions of placemaking, place management and “universal design” have been increasingly, and some would argue, uncritically adopted as more inclusive planning mechanisms, Eve-Marie Davie’s work asks a number of searching questions of the effectiveness of these practices in properly acknowledging the rights and needs of minority groups.

The thesis is particularly noteworthy for the different research approaches adopted in its development. An analysis of prize-winners from both PIA and the Australian Urban Design Awards demonstrated an alarming lack of consideration of the specific needs of CALD groups who were rarely consulted when designing public open space. This result was mirrored in the analysis of regional plans, local planning policies and in interviews with planners and community development officers within Greater Adelaide.

This detailed analysis makes for sobering reading for any planner with an interest in social/community equity. While the profession continues to extol the virtues of current approaches to designing elements of the public realm, Eve-Marie Davie’s thesis clearly demonstrates that the planning and design professions need to develop new approaches to the way in which public space is thought about, designed and delivered if we are to properly accommodate and positively respond to cultural difference.



Minister's Award

This Award is given to the overall winner of the South Australian Awards for Planning Excellence and is judged by the SA Minister for Planning

AWARD

ADELAIDE OVAL

Adelaide Oval Stadium Management Authority (AOSMA)

To be most effective, planning must be about more than good policies, processes and systems – it must be backed by project investment by both the public and private sectors, delivering build form outcomes for the benefit of the communities of the State.

The redevelopment of Adelaide Oval is without doubt one of the most significant and successful city-shaping projects of recent years, benefiting not just the city and inner suburbs, but all South Australia.

This Government's planning agenda is directed towards renewing our urban future through a focus on infill (renewing our inner and middle suburbs), investment (stimulating our economy) and involvement, (engaging with our communities).

The Adelaide Oval is a place that contributes strongly on these three themes, and is a centrepiece in the creation of a vibrant inner city.

By renewing a cultural and entertainment asset of longstanding importance, Adelaide Oval has revitalised the entire Riverbank Precinct and significant areas beyond.

As a magnet for visitors, tourists and sports lovers, it is drawing crowds to the city in ever-growing numbers.

And as a much-loved community icon, it has a proud place in the heart of all South Australians.

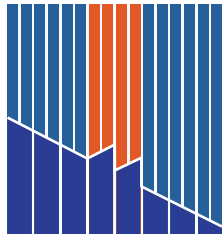
I am pleased to confer the 2015 Minister's Award upon the Adelaide Oval – one of the truly great places of our State.



President's Award

This Award recognises the most outstanding contribution to issues relating to urban and or regional planning in SA.

AWARD



THE PLANNING EDUCATION FOUNDATION OF SOUTH AUSTRALIA INC

The Planning Education Foundation of South Australia Inc was established following the very successful Eastern Regional Organisation for Planning Human Settlements (EAROPH) World Planning & Housing Congress held in Adelaide in 1986. Formally established in December 1988, the Planning Education Foundation of South Australia Inc is an independent non-profit entity. The objectives of the PEF were to:

- Promote or undertake urban, regional and rural planning research which in the opinion of the Foundation may be of value to the practice of planning;
- Promote and provide planning education, including the education of planners and persons employed by planners;
- Convene public forums and seminars to promote community education in planning and planning systems;
- Publish or subsidise the publication of materials relating to, resulting from or connected with carrying out the objectives of the Foundation;
- Providing planning information to the community.

In its early years the Planning Education Foundation of South Australia Inc (PEF) funded educational and research activities. The seminars and courses it ran offered professional development opportunities for planners and also allowed the community at large to gain an understanding of planning issues and the planning system in South Australia. Over its history, the Planning Education Foundation of South Australia Inc ran successful seminars at modest prices to support a broad attendance.

The relative inactivity of the PEF in recent years, given its role as an event and education provider in South Australia being filled by PIA, saw the Board make a decision in 2013 to wind up the Planning Education Foundation of South Australia Inc and expend its remaining funds on a number of planning projects that have the potential for long term benefit.

While continuing to sponsor events like the annual Tom McKenna lecture, 2014-2015 saw a number of major projects funded by the PEF including the 'Oral History of planning contribution to state planning from 1970', the national Planning Ideas Competition which was a centrepiece in PIA's Planning Matters strategy and an upcoming commemorative edition of SA Planner.

The PEF has been a major contributor to the education of planning professionals and the community. In recognition of its important role over many years I award the 2015 Presidents Award to The Planning Education Foundation of South Australia Inc.

Fellow Elevations

LIFE FELLOW ELEVATION

Gregory Tucker (LFPIA)

Following graduation from the South Australian Institute of Technology, Gregory Tucker accepted a role as planner at the Barossa Council in 1979, leaving the Council in 1996. Following this he joined the then private consulting firm of PPK and subsequently the Light Regional Council. In 1999 he established his own consulting practise in the Barossa Valley which he continues to run.

Greg became a member of the Royal Australian Planning Institute in 1996, and was nominated to Fellow in 2002. Throughout his membership of the Institute he has delivered distinguished service to the profession, particularly at the state level through his long and distinguished career in local government and in the private sector. He has also generously given his time to the profession.

His passion, enthusiasm and commitment to the profession and the Planning Institute have inspired others and he continues to make an enormous contribution to both. He has a passionate concern for the interests of the environment and the community. Having spent a large proportion of his professional career in the Barossa he has established himself an enviable reputation as the “go to” planner in the Valley.

Greg is a stalwart of the South Australian planning profession and is recognised throughout the industry, local government and the industry as a planner and leader of the highest calibre.

In his busy career, Greg has managed to give back to the planning profession through his involvement on the RAPI and PIA Executive committees, the former PEF Board, the State Awards committee, as mentor to young planners and more recently as the key driver behind the Institutes involvement in the Sampson Flat bushfire recovery efforts. All of which have played a significant contribution to the raising of the profile of planning profession in the state.

Greg has maintained an active involvement in the organisation of conferences and seminars, including at national and state conferences. He is a mentor and a leading figure to many and the general planning profession in SA. He has had a long and distinguished career in SA that is deserving of mention. Greg has and will continue to make a highly valued contribution to the profession through both his work and volunteer efforts with the Institute and the community.

Greg should be commended for his efforts and is worthy of elevation to the status of Life Fellow of the Institute.

Fellow Elevations

FELLOW ELEVATION

SANDY RIX (FPIA CPP)



An urban designer, and economist by training and experience, Sandy Rix is passionate about what he does, and generous in sharing his extensive knowledge with colleagues and students as well as actively contributing to the pursuit of planning excellence in South Australia as a member of the Planning Institute of Australia.

Sandy has made a consistent and outstanding contribution to the development of the state in his capacity as project manager with the State government in the creative pursuit of excellence in public places and urban renewal opportunities. The nature of his work does not attract personal publicity, but the results speak for themselves. He has combined inspiring professional integrity and ethics, common sense and an approachable manner in negotiating positive outcomes with a range of participants involved public and private projects. His capacity to consider aspects of project development that are 'outside the square' is inspirational and has done much to improve and further the practice of planning.

He holds a Bachelor of Arts in Planning from the University of South Australia and a Master of Science in Urban and Regional Economics from the London School of Economics.

He returned to work in Adelaide after a three year stint in London as Head of Research for the chartered surveyors Sweby Cowan, which led to Sandy authoring a book on property investment in Europe. This knowledge is reflected in his project management skills in fine balance with a flair for the arts and creativity.

Following many years in planning and management consultancy, his passion and experience in urban design led to his appointment from 2000 to 2004 as Project Director for the planning, design and feasibility of the successful first stage of the North Terrace Redevelopment.

Prior to working for the State directing major renewal projects at Renewal SA Sandy worked for the Capital City Committee directing the award winning North Terrace Redevelopment design and funding. Before this he was in private practice for many years and local government for five years. He worked in numerous projects for private and government clients.

Sandy Rix was also General Manager, Projects for the South Australian Government's for strategic planning (including infill and TOD), and environmental services. As part of Sandy's role, he was project director for the Bowden Urban Village, overseeing the master planning and feasibility assessments for this critically important place-making development.

He was the SA Planner of the Year in 2013 and the National Planner of the Year in 2014.

In short, Sandy is thoroughly deserving of elevation to Fellow of PIA.

FELLOW ELEVATION

Henry Inat (FPIA)

Henry's career commenced as a Planning Inspector with the Barossa Council having graduated from the University of SA in 1988. He had stints with Playford, Port Adelaide Enfield and Mallala before joining Planning SA in 1997 as Chief Project Officer. Leaving in 2000, he briefly undertook the role as Strategy Analyst with the Department of Treasury and Finance before rejoining local government in late 2000.

In 1991, Henry completed his Graduate Diploma in Regional and Urban Planning, and in 1999 he completed a Graduate Diploma in Management which saw Henry embarked on a management career that was still aligned to his planning roots, taking on roles as Manager at Norwood, General Managers at Mount Barker and Charles Sturt.

The knowledge and skills Henry developed throughout his long career in State and Local Government has resulted in him now being the CEO at the Town of Gawler. As CEO, he continues to support planning and PIA through his encouragement of his planning staff to be PIA members and attend PIA events.

He is currently completing a Masters of Business Administration to further develop his leadership and management knowledge and skills.

Henry's has been active in PIA activities in South Australia during his career, and his contribution to the Planning Institute of Australia (SA Division) is well regarded and has included holding the position of Hon Secretary in 1999, and Hon Treasurer in 1999-2000 and again 2010-2011, and as a member of the former PEF Board.

Those who have worked with Henry will agree that he is passionate about planning, and seeks to make a better place for our community.

It is with great pleasure that PIA elevates Henry to Fellow.



2015 Planning Excellence Awards - Overview

OVERVIEW

Young Planner of the Year Award

Winner: Laura Murphy Jacobs Group (Australia) Pty. Ltd.

Improving Planning Processes and Practices

Commendation: Jensen Planning + Design, Rawtec, Green Industries SA, Renewal SA and Property Council of Australia SA

Best Planning Ideas Award - Large

Commendation: City of Onkaparinga; City of Holdfast Bay; City of Marion; City of Mitcham; URPS; Seed Consulting Services; Jacobs; Ecocreative; Econsearch; Australian Workplace Innovation and Social Research Centre; Concepts of Change.

Commendation: District Council of Mallala, Planning Aspects Pty Ltd , MWH Global, Tonkin Consulting and Donna Ferretti and Associates

Best Planning Ideas Award - Small

Commendation: District Council of Grant, MasterPlan SA Pty Ltd, Ian Robertson Design and Outerspace Landscape Architects.

Hard Won Victory

Winner: City of Onkaparinga.

Great Place

Winner: Adelaide Oval Stadium Management Authority.

Commendation: ASPECT Studios, Playce Pty Ltd, Wallbridge & Gilbert, FMG Engineering, URPS; Hydroplan, Lucid Engineering and Rider Levett Bucknall.

Outstanding Student Project - Tertiary

Winner: Eve-Marie Davie, University of South Australia

Commendation: Hannah Kennedy, University of South Australia

Public Engagement and Community Planning Award

Winner: City of Prospect

Minister's Award

Winner: Adelaide Oval Stadium Management Authority.

President's Award

Winner: The Planning Education Foundation of South Australia Inc (PEF)

2015 Awards for Planning Excellence - Nominees

NOMINEES - ALL CATEGORIES

Project name: Murray Bridge Residential Growth Areas Structure Plans

Project team: Rural City of Murray Bridge, Jensen Planning + Design, MLEI Consulting Engineers, JAC Comrie Pty Ltd

Project name: The Barossa Council Strategic Directions Report

Project team: The Barossa Council, URS Australia

Project name: The Barossa Council Rural Areas and Character Review

Project team: The Barossa Council, URS Australia, URPS

Project name: City of West Torrens Housing Diversity Development Plan Amendment

Project team: City of West Torrens, URPS

Project name: Resilient South Regional Climate Change Adaption Plan

Project team: City of Onkaparinga, City of Holdfast Bay, City of Marion, City of Mitchm, URPS, Seed Consulting Services, Jacobs, Ecocreative, Econsearch, Australian Workplace Innovation and Social Research Centre, Concepts of Change

Project name: Cleland Wildlife Park Master Plan

Project team: URPS, WAX Design, Phillips Pilkington Architects, Lorraine Edmunds, Sanmor and Associates, EBS Ecology, Heinrich Consulting

Project name: Mallala Broadacre Farming Study

Project team: District Council of Mallala, Planning Aspects Pty Ltd, MWH Global, Tonkin Consulting, Donna Ferretti and Associates

Project name: Adelaide Airport Master Plan 2014

Project team: AECOM Australia Pty Ltd, Adelaide Airport Limited, MFY, Hudson Howells, Synnot Wilkinson Strategic Environment Consulting, Airbiz, Toucan

Project name: Burra Skate Park

Project team: Regional Council of Goyder

Project name: Port Adelaide Precinct Plan

Project team: Renewal SA, Fyfe (Connor Holmes)

Project name: River and Coastal Communities Urban Design Framework and Master Plan

Project team: District Council of Grant, MasterPlan SA Pty Ltd, Ian Robertson Design, Outerspace Landscape Architects

Project name: Design Thinking Drawing Adelaide

Project team: Jensen Planning + Design, Deicke Richards

Project name: Prospect Road Village Heart

Project team: City of Prospect

Project name: Playord Alive Town Park

Project team: Aspect Studios, Playce Pty Ltd, Wallbridge & Gilbert, FMG Engineering, URPS, Hydroplan, Lucin Engineering, Rider Levett Buckmall

2015 Planning Excellence Awards - Nominees

NOMINEES - ALL CATEGORIES

Project name: Hart's Mill, Port Adelaide

Project team: Port Adelaide Enfield Council, Renewal SA, Mulloway Studios, Aspect Studios

Project name: Mortlock Park, Colonel Light Gardens

Project team: The City of Mitcham, Ian Robertson Design, Greenhill

Project name: Frank Hilton Landfill Remediation Project

Project team: City of Onkaparinga

Project name: South Australia Better Practice Guide Waste Management for Residential and Mixed Use Developments

Project team: Jensen Planning + Design, Rawtec, Green Industries SA, Renewal SA, Property Council

Project name: Public Spaces for Everyone or Just the Majority?

Project team: Eve-Marie Davie - University of South Australia

Project name: Social Inequalities in Fast Food Exposure Around Schools in Metropolitan Adelaide: An Urban Planning Perspective

Project team: Hannah Kennedy - University of South Australia

Project name: Students of Design Studio VI - Landscapes of Transition 2014

Project team: Students of Design Studio VI

Project name: PEF Oral Histories Project

Project team: Planning Education Foundation of South Australia

Project name: Picture Adelaide 2040

Project team: Adelaide City Council

Project name: Memorial Gardens Master Plan

Project team: City of Prospect

Project name: Our Market District - The Right Ingredients For The Future

Project team: Adelaide City Council

Project name: Invigorate Your Sense - Topham to Market Place Plan

Project team: Adelaide City Council

Project name: Barossa Character Values Community Engagement

Project team: The Barossa Council, URS Australia

Project name: Strathalbyn Town Plan 2014-2024

Project team: URPS, WAX Design, Tonkin Consulting, Mulloway Studio

Project name: Hackham South East Development Project / Infrastructure Planning + Development Policy Phase

Project team: City of Onkaparinga

Project name: Frank Hilton Landfill Remediation Project

Project team: City of Onkaparinga

Mapping and Visualisation Solutions

Development Plan - Zone, Policy, Structure, Concept plans...

Maps and Concepts to order - ERD Court - GIS Analysis/Mapping - Visual design



Simplifying complex planning concepts
State / Local Government Specialists



Over 30 years local/International expertise, knowledge & experience

Integrated Planning and Technical Services

- GIS and Illustrative Mapping
- Analysis, Visual Design & Communications
- Water Resource Management & Engineering

t 0413 160 922 e Davidlloyd@ipts.com.au

We're different for a good reason.

Kelley Jones is a different law firm than you're used to. We are specialist lawyers for local government who will not act against or contrary to the interests of any council.

If you want to work with a team that is passionate about providing an exemplary service and has specialist knowledge and expertise in **Planning & Building Law** as well as **Environmental Law**, give us a call.

(08) 8113 7100
info@kelleyjones.com.au
kelleyjones.com.au

kelleyjones

Lead. Reason. Advise.



PIA AWARDS FOR PLANNING EXCELLENCE 2015

Design & layout: Integrated Planning and Technical Services
www.ipts.com.au